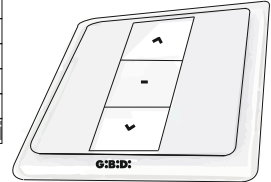


TECHNICAL FEATURES

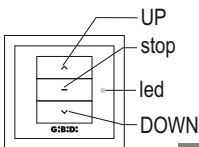
Model	EWSETX1WALLB
Carrier frequency	433.920 MHz
ISM European frew.range	433.05 MHz - 434.79 MHz
Radiated carrier (E.R.P.)	0 dBm
Modulation	Digitale 00K (ON-OFF Keyng)
Size	80x80x15 mm
working temperature	0°C + 50°C
Number of channels	1
transmission	monodirectional - Bidirectional DEFAULT



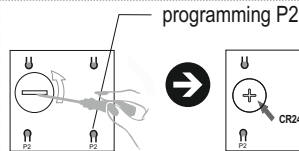
COMPATIBLE PRODUCTS

monodirectionals:	Martin, Sail, Runner RE and Runner RE-B
bidirectionals:	Runner REB, REB-B

KEY TO SYMBOLS



FRONT OF THE REMOTE CONTROL



BACK OF REMOTE CONTROL

replace the battery only if it is the same or equivalent, dispose of used batteries in compliance with current regulations

KEY PRESSURE TIME



Press key for "X" seconds

TRANSMITTER STATUS

- N** New transmitter not stored
- P** Transmitter already stored

OPERATION CONFIRMATION



POWER-UP MOTOR/CONTROL UNIT

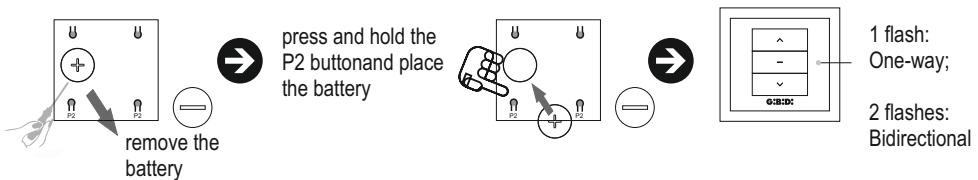


Cut power off



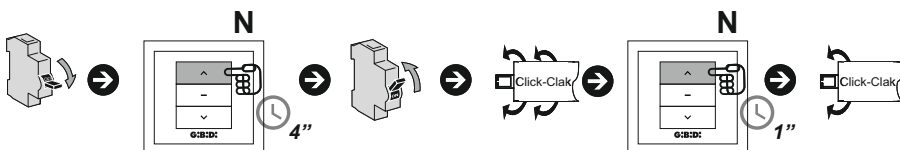
Give power supply

CONVERT THE REMOTE CONTROL FROM BIDIRECTIONAL TO UNIDIRECTIONAL AND VICE VERSA

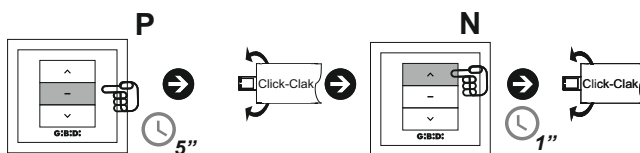



STORAGE OF THE TRANSMITTER IN A RUNNER RE OPERATOR (MONO-DIRECTIONAL)

A - Memorization of the first transmitter on a RUNNER RE operator



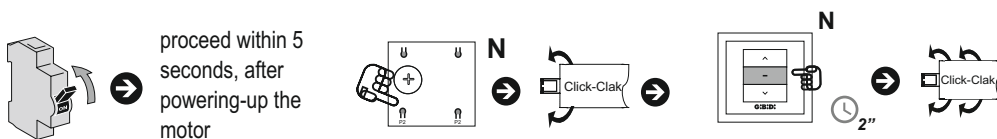
B - Memorizing a new transmitter through a remote control already memorized in a RUNNER RE motor



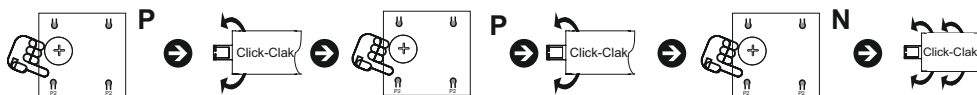
 for all other storage / functions referring to unidirectional devices, refer to the instructions of the operator or the associated control unit.


STORAGE OF THE TRANSMITTER IN A REB RUNNER MOTOR (BIDIRECTIONAL)

A - Memorization of the first transmitter on a RUNNER REB operator



B - Memorizing a new transmitter through a remote control already memorized in a RUNNER REB operator



 for all other memorizations / functions referring to bidirectional devices, refer to the instructions of the engine or the combined control unit.

UE manufacturer declaration of conformity

The EU declaration of conformity is available at the internet address <http://conformity.gibidi.com>

GI.BI.DI. S.r.l. reserves the right to modify the technical data without notice, depending on the evolution of the product.



Scarica le istruzioni in italiano

Descarga instrucciones en Español

Téléchargements instructions en Français



GI.BI.DI. S.r.l.
Via Abetone Brennero, 177/B
46025 Poggio Rusco (MN) - ITALY
www.gibidi.com

Tel. +39.0386.52.20.11
Fax +39.0386.52.20.31
E-mail: info@gibidi.com
Numero Verde: 800.290156

Cod. AIC8412 - 02/24- Rev. 00

GIBIDI