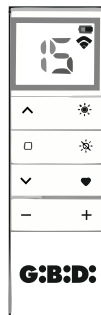


FEATURES

Model	BRICKSUN - EWSETX16BRICKSUN
Working frequency	433.920 MHz
ISM European frequency range	433.05 MHz - 434.79 MHz
Radiated carrier (E.R.P.)	0 dBm
Modulation	Digital 00K (ON-OFF Keyng)
Size	46x135x12 mm
Working temperature	0°C + 50°C
Number of channels	16
Type of transmission	Bidirectional



Each channel can control a different automation or groups of automations. Channel 0 is a sequential command of all channels.

COMPATIBLE PRODUCTS

bidirectionals: Runner REB, Runner REB-B motors

SYMBOL LEGEND

Up stop

Downs

Channel selection button

during transmission, the command given relating to the selected channel and any battery symbol indicating that it is flat are shown on the display.

enable SUN function

disable SUN function

intermediate limit switch

Each time the SUN button is pressed the motor will perform a movement:

enabling

disabling:


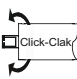

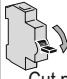
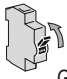
REMOTE CONTROL FRONT SIDE

P2 programming button

replace the battery only if it is the same or equivalent, dispose of used batteries in compliance with current regulations

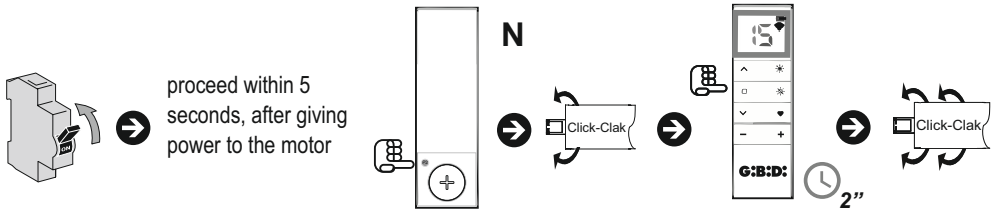
CR2450

REMOTE CONTROL BACK SIDE

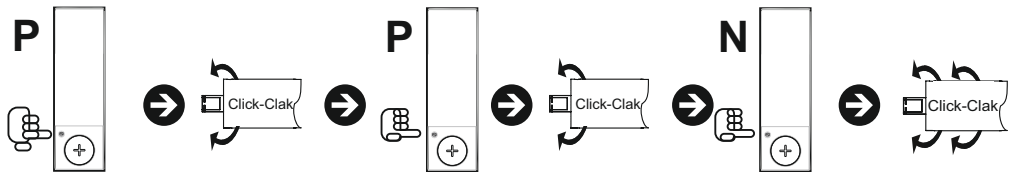
KEY PRESS TIME	REMOTE CONTROL STATUS	CONFIRMED OPERATION	MOTOR/CONTROLLER POWER SUPPLY
 Press key for "X" seconds	N New transmitter not stored P Transmitter already stored	 /  motor movement	  Cut power supply Give power supply

LEARNING OF THE TRANSMITTER IN A REB RUNNER MOTOR (BIDIRECTIONAL)

A - Learning of the first transmitter on a RUNNER REB operator



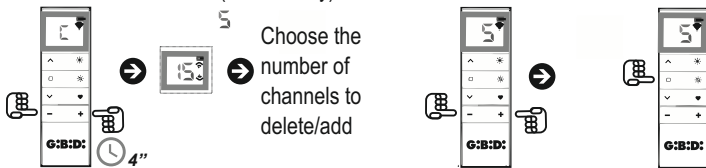
B - Add a new transmitter through a remote control already memorized in a RUNNER REB motor



for all other learnings/functions referring to bidirectional devices, refer to the instructions of the operator or the control unit

LIMITATION OF THE NUMBER OF CHANNELS

It is possible to first limit and then restore (if necessary) the number of active channels of the transmitter



Download instruction in English

Descarga instrucciones en Español

Téléchargements instructions en Français



EU manufacturer's declaration:

The EU declaration of conformity is available at the internet address <http://conformity.gibidi.com>

GI.BI.DI. S.r.l. reserves the right to modify the technical data without notice, depending on the evolution of the product



GI.BI.DI. S.r.l.
Via Abetone Brennero, 177/B
46025 Poggio Rusco (MN) - ITALY
www.gibidi.com

Tel. +39.0386.52.20.11
Fax +39.0386.52.20.31
E-mail: info@gibidi.com
Numero Verde: 800.290156

Cod. AIC8234 - 04/24 - Rev. 00

G:B:D: