

CHARACTERISTICS

Type	BRICK - EWSETX16BRICK
Carrier frequency	433.920 MHz
European band ISM	433.05 MHz - 434.79 MHz
Irradiated carrier (E.R.P.)	0 dBm
Modulation	Digital 00K (ON-OFF Keyng)
Dimensions	46x135x12 mm
Operating temperature	0°C + 50°C
Channels number	16
Transmission	Unidirectional - Bidirectional <small>DEFAULT</small>

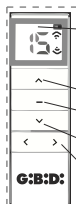
COMPATIBLE PRODUCTS

unidirectional :	control unit Martin, Sail, motors Runner RE and Runner RE-B
bidirectional:	Runner REB, motors Runner REB-B

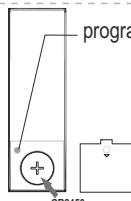


Each channel can command a different automation or units of automation.
The channel 0 is a sequential command of all the channels.

LEGEND OF SYMBOLS



during the transmission the display shows the command given concerning the channel selected and the possible battery symbol, indicating it is low.



programming P2

replace the battery only if same or equivalent, dispose of exhausting batteries in accordance with current standards

TRANSMITTER FRONT

CR2450

TRANSMITTER BACK

PUSHING TIME



X"

Push the button for X s

TRANSMITTER STATUS

N New transmitter not stored

P Transmitter already stored

OPERATION CONFIRMATION



MOTOR / CONTROL UNIT POWER SUPPLY

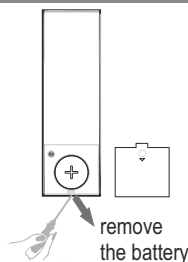


Disconnect the power



Reconnect the power

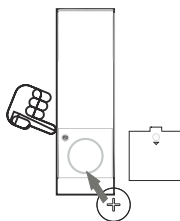
CONVERT THE TRANSMITTER FROM BIDIRECTIONAL TO UNIDIRECTIONAL AND VICEVERSA



remove the battery

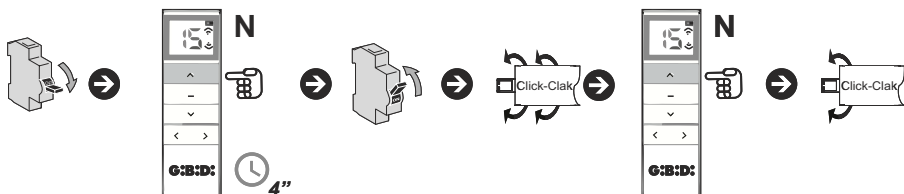


push and hold down the button P2 and mount the battery

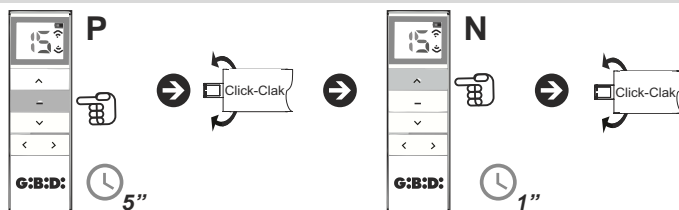


STORAGE OF THE TRANSMITTER IN A MOTOR RUNNER RE (UNIDIRECTIONAL)

A - Storage of the first transmitter on a motor RUNNER RE



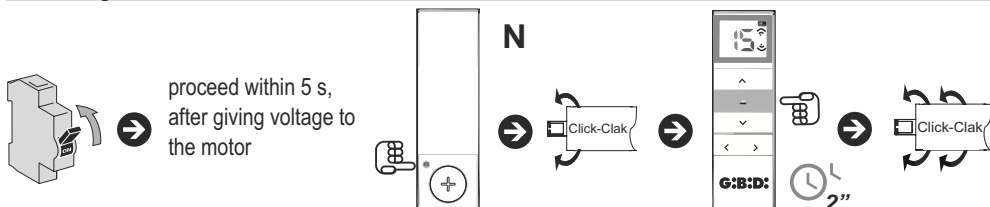
B - Storage of a new transmitter by a transmitter already stored in a motor RUNNER RE



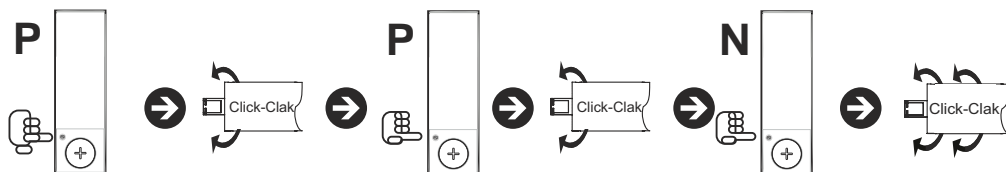
! for all the other storages / functions concerning unidirectional devices, make reference to the instruction of the motor or the control unit matched

STORAGE OF THE TRANSMITTER IN A MOTOR RUNNER REB (BIDIRECTIONAL)

A - Storage of the first transmitter on a motor RUNNER REB



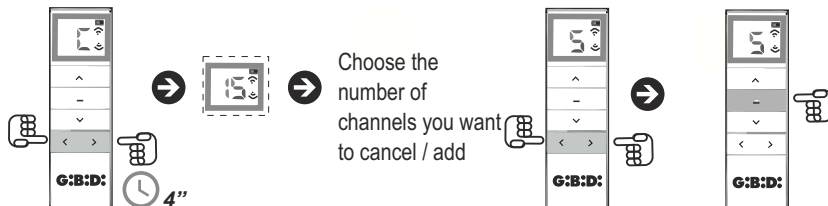
B - Storage of a new transmitter by a transmitter already stored in a motor RUNNER REB



! for all the other storages / functions concerning bidirectional devices, make reference to the instruction of the motor or the control unit matched

LIMITATION OF THE NUMBER OF CHANNELS

It is possible to limit and then recharge (if necessary) the number of active channels of the transmitter



UE / UKCA declaration of the manufacturer:

The UE / UKCA declaration of conformity is available at the internet address <http://conformity.gibidi.com>

GI.BI.DI. S.r.l. reserves the right to modify the technical data without notice, according to the evolution of the product



GI.BI.DI. S.r.l.
Via Abetone Brennero, 177/B
46025 Poggio Rusco (MN) - ITALY
www.gibidi.com

Tel. +39.0386.52.20.11
Fax +39.0386.52.20.31
E-mail: info@gibidi.com
Numero Verde: 800.290156

Cod. AIC8225 - 01/23- Rev. 00

G:B:D: