



● RUNNER REB-B



REB-B45 20/10
REB-B28 28/2

Motoriduttore tubolare elettronico
ISTRUZIONI PER L'INSTALLAZIONE

Electronic tubular motor
INSTRUCTION FOR INSTALLATION

Motoréducteur tubulaire électronique
INSTRUCTIONS POUR L'INSTALLATION

Motoreductor tubular electrónico
INSTRUCCIONES PARA LA INSTALACIÓN

UK

Thank you for choosing GI.BI.DI.



READ CAREFULLY THIS MANUAL BEFORE PROCEEDING WITH THE INSTALLATION

WARNINGS:

This product has been tested in GI.BI.DI. for full compliance with the requirements of the directives in force. GI.BI.DI. S.r.l. reserves the right to change the technical data without prior notice, in relation to product development.

DISPOSAL: GI.BI.DI. advises recycling the plastic components and dispose of them at special authorized centres for electronic components, thus protecting the environment from polluting substances.



INTRODUCTION

RUNNER REB-B can satisfy every specific need to motorize curtains and shutters. The built-in bidirectional radio receiver allows programming and managing the motor by remote control.

WARNINGS FOR THE INSTALLATION

- Keep all the materials contained in the packaging away from children, since they pose a potential risk.
- The manufacturer declines all responsibility for improper functioning of the automated device, if the original components and accessories suitable for the specific application are not used.
- After the installation, always carefully check the proper functioning of the system and devices used.
- This instruction manual addresses professionals qualified to install "powered equipment" and therefore requires good technical knowledge and installation in compliance with the regulations in force.
- The maintenance can be carried out by qualified personnel.
- Before carrying out any cleaning or maintenance operation, disconnect the control unit from the main line.
- This product has been designed and constructed exclusively for the use indicated in this documentation. Any other use may cause damage to the product and be a source of danger.
- Verify the end purpose of the product and take the necessary safety precautions.
- The use of the product for purposes different from the intended use has not been tested by the manufacturer and is therefore on full responsibility of the installer.
- All the operations of installation, connection, programming and maintenance of the product must be carried out exclusively by a qualified and competent technician, respecting the laws, norms, local regulations and instruction indicated in this manual.
- Before starting the installation, read the paragraph «PRELIMINARY WARNINGS» to check if the product is suitable to automate your roller shutter (or curtain). If it is not suitable, DO NOT proceed to the installation.
- All the operations of installation and maintenance of the product must be done with the automatic device with the power disconnected. Moreover, before starting, put on the cut-off device the sign "WARNING! CURRENT MAINTENANCE".
- Before starting the installation operations, move away all the electrical cables involved; moreover, disable all the systems not necessary to the motorized operation of your rolling shutter (or curtain).
- During the installation, keep the people away from the rolling shutter (or curtain) when it is moving.
- The list of the mechanical parts necessary to match this motor with the rolling shutter (or curtain) is in GiBiDi catalogue.
- If the product is installed at less than 2,5 m from the floor or other bearing surface, it is necessary to protect its moving parts with a cover, to prevent the accidental access. For the protection, make reference to the instruction manual of the rolling shutter (or curtain), ensuring anyway the access for maintenance interventions.
- For awnings, it is necessary to ensure a min. horizontal distance of 40 cm between the awning completely open and an eventual fixed object, put in front of it.
- During the installation, carefully handle the product: avoid any crushing, shock, fall or contact with any liquid; do not introduce any sharp object in the motor; do not drill or apply any screw outside the motor; do not put the product near heat sources or expose it to open flame.
- These actions can damage the product and cause malfunction or dangerous situations. In this case, you have to immediately stop the installation and call GiBiDi technical assistance.
- Do not put any screw on the roller tube, in the section internally crossed by the motor. These screws could damage the motor.
- Do not disassemble the product for operations different from the ones shown in this manual.
- Do not modify any part of the product, excluded the ones shown in this manual. The manufacturer declines any responsibility for damages deriving from arbitrary modifications of the product.

WARNINGS FOR THE USER

- The product cannot be used by people (children included) with limited physical, sensorial or mental abilities, or without experience or knowledge.
- Do not allow children to play with fixed control devices.
- During any manoeuvre, check the automation and keep people at a safe distance, until the end of the movement.
- Do not command the automation when some works, as glass cleaning, maintenance, etc. are carried out nearby.
- Remind to often check the balance springs (if they are present). Do not use the automation, if it needs some adjustment or repair; exclusively address to specialized technical staff to solve these problems.



WARNING: IMPORTANT SAFETY INSTRUCTION
It is important to follow this instruction for people safety.
Keep this instruction manual.

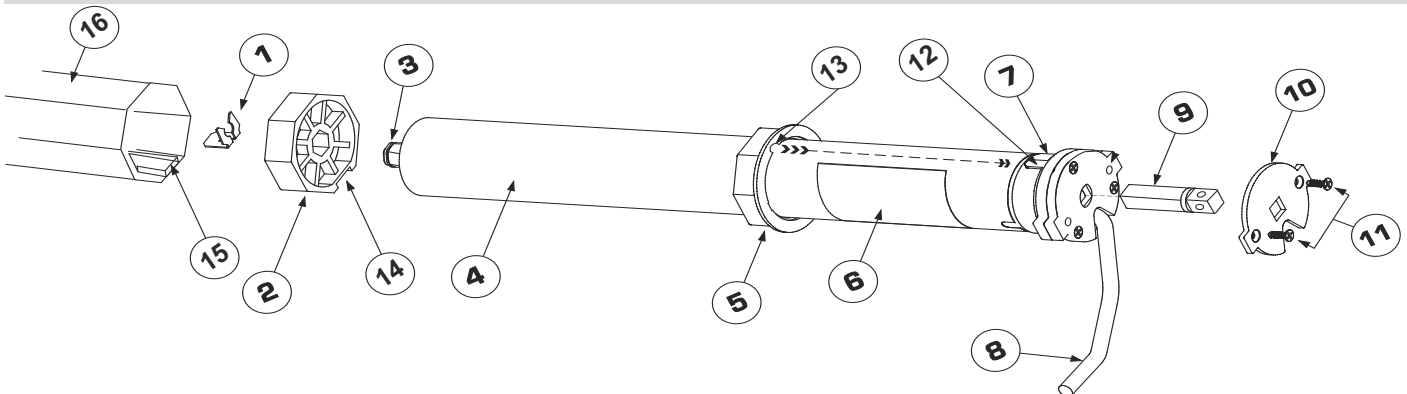
TECHNICAL DATA

Operator	REB-B 28 28/2	REB-B 45 20/10
Nominal torque	2 Nm	20 Nm
Nominal speed	28 rpm	10 rpm
Tube diameter	28 mm	45 mm
Nominal power	13 W	50 W
Power supply	12 Vdc	
Operating temperature	-20°C + 60°C	
Degree of protection IP	IP 20	
Frequency of use	Max 4min granted of continuous use	
Radio receiver	433,92MHz, built-in	

PRELIMINARY WARNINGS

- Check the integrity of the product right after having removed the package.
- This product is available in different versions, each one with a specific motor torque. Each version is designed to move roller shutters (or curtains) with specific dimensions and weight. Therefore, before the installation, be sure that the parameters of motor torque, rotation speed and operation time of this product are suitable to automate your roller shutter (or curtain). In particular, do not install the product if the motor torque is higher than the one necessary to move your roller shutter (or curtain).
- Check the diameter of the roller tube, that must be chosen according to the motor torque.
- Before automating a curtain, check that, in front of it, there is free space, sufficient for the total opening required.
- In case of installation outdoor, properly protect the motor from the atmospheric agents.

COMPOSITION OF THE MOTOR



- 1 Locking clip of the pulley on the pinion
- 2 Driving pulley
- 3 Output pinion
- 4 Motor tube
- 5 Adapter ring gear
- 6 Label with motor data
- 7 Limit switch base crown
- 8 Power cable

- 9 Square pin
- 10 Iron plate to block the pin on limit switch header
- 11 Plate closing screws on limit switch header
- 12-13 Driving pulley slot
- 14 Roller tube slot
- 15 Roller tube

UK

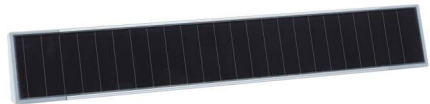
INSTALLATION

- Put the adapter crown (5) on the base crown of the limit switch (7), being sure that the two reference joints (12 and 13) match.
- Put the driving pulley (2) on the output pinion (3).
- After putting the driving pulley on the output pinion, block it with the clip (1).
- Put the square pin (9) in the square hole of limit switch header.
- Put the iron plate (10) in the square pin (9) and fix it with the two closing screws (11).
- Put the motor (4) in the roller tube (16), paying attention that the slot (14) of the driving pulley matches the roller tube slot (15).
- Push the motor as long as the adapter crown (5) fits in the roller tube (16).

RECHARGE INSTRUCTION E ELECTRICAL WIRING



Jack charger



Solar panel

- The motor includes a 12V lithium battery with charging station.
- The motor does not need any fixed electrical wiring to the power supply, being provided with a lithium battery.
- Max. charging capability: 12.6V-1A (Type C) and 12V-16V (Solar).
- Before the first use, connect the power supply connector (panel / power adapter) to the motor and charge the battery for at least 6 hours.
- During the operation, the motor will stop when the battery is less than 8V.
- During the charging, the alarm will stop sounding when the battery is higher than 7V and will start sounding again when it is lower than 7,5V.
- When the motor is working with a 10V battery, the alarm will sound 10 times.

SYMBOLS LEGEND

The values by DEFAULT of the different parameters are u

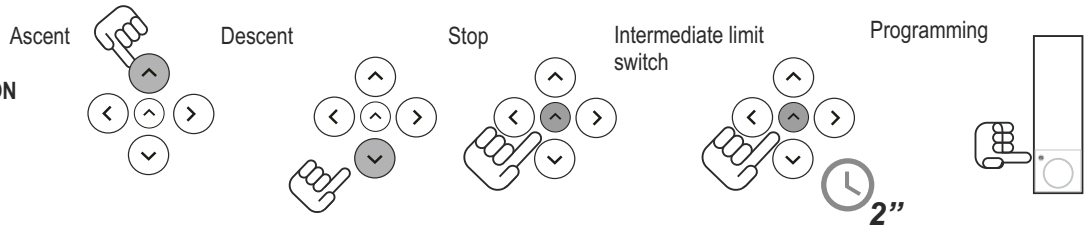


Push the button Prog on motor header



Parts to be read carefully.

REMOTE CONTROL OPERATION



PUSHING TIME

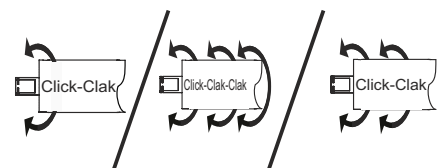


Push the button for X seconds

TRANSMITTER STATUS

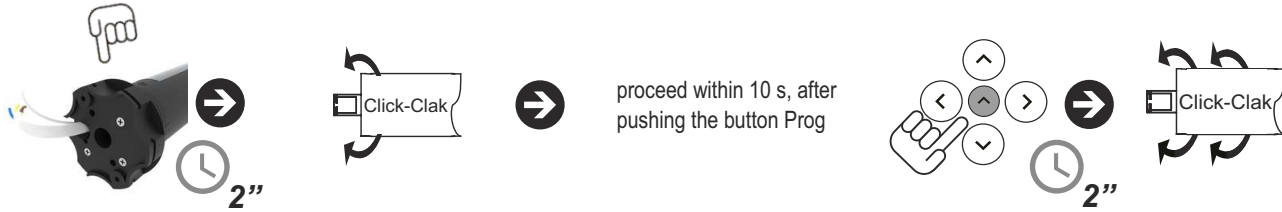
- P** Transmitter already stored
- N** New transmitter not stored
- E** Transmitter to be cancelled

OPERATION CONFIRMATION



START UP:

1 - Storage of the first transmitter



Warning: next actions of the curtain / roller shutter must be carried out hold-to-run (operation par. 5).
If the ascent and descent buttons of the transmitter stored are right, proceed to par. 3, on the contrary to par. 2.

2 - Modification of the rotation direction



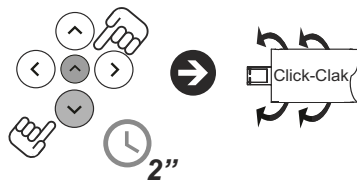
3 - Manual storage of the limit switch



Warning: during the positioning, the transmitter actions with buttons of Ascent and Descent direction hold-to-run: any time you push a button (ascent or descent), the motor moves for 1 sec. Holding down the button for more than 2 s, the motor automatically moves.

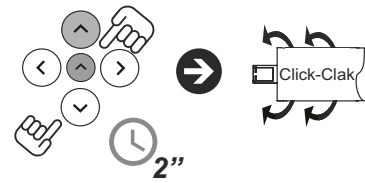
descent limit switch

Put the roller shutter / curtain at the lower limit switch



ascent limit switch

Put the roller shutter / curtain at the upper limit switch



intermediate limit switch

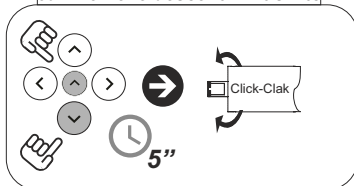
Put the roller shutter / curtain at lower limit switch at the intermediate position required



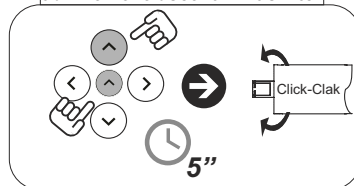
4 - Limit switch removal

It is possible to remove either one limit switch or all of them. The procedure can be carried out with the roller shutter / curtain in any position.

5a - Remove descent limit switch



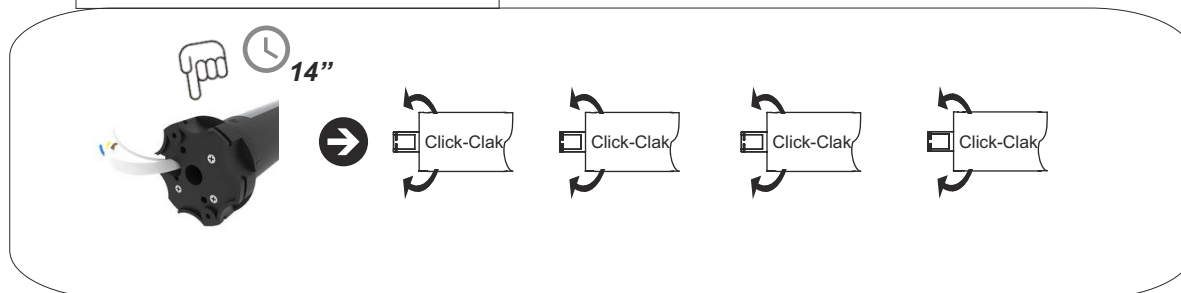
5b - Remove ascent limit switch



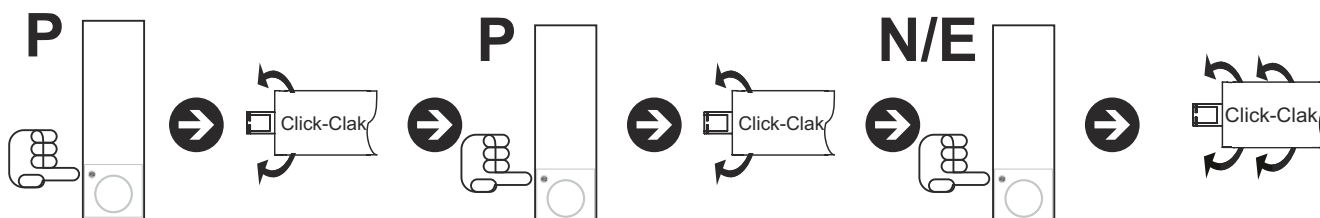
5c - Remove intermediate limit switch

Follow the same procedure indicated in "INTERMEDIATE LIMIT SWITCH" in chapter 3a

9e - Factory resetting



10 - Store or cancel one transmitter using a transmitter previously stored



GUIDE TO PROBLEMS SOLUTIONS

- **Giving a movement command or pushing the button to start a manoeuvre, the motor does not start.**
 - a) Check if the thermic protection of the motor is taking place. In this case, to restore the normal operation, just wait for the motor to cool down.
 - b) Check that the "RADIO BLOCK" is disabled.
 - c) Check the battery status.
- **If the motor does not automatically stop when the roller shutter (or the curtain) arrives to a limit switch.**
 - a) During the manoeuvre, be sure that the roller tube drags the ring of the limit switch.
- **The first transmitter cannot be stored**
 - a) Repeat the procedure "Storage of the first transmitter";
 - b) Check that the "RADIO BLOCK" is disabled
- **All the transmitters cannot be cancelled form the memory of the motor**
 - a) Be sure that the transmitter used to make the procedure «cancel all the transmitters» is stored

If after these checks the problems continue, address to a qualified technician, or call GiBiDi Technical Assistance.



Download instruction in English

Descarga instrucciones en Español

Téléchargements instructions en Français

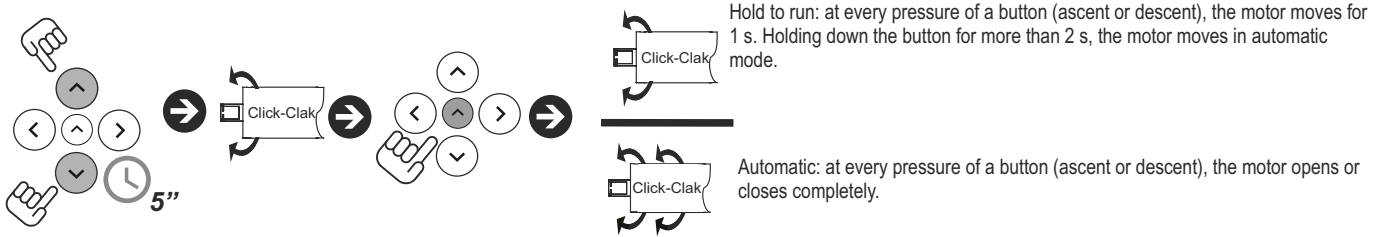


Declaration of UE manufacturer:

The UE declaration of conformity is available at <http://conformity.gibidi.com>

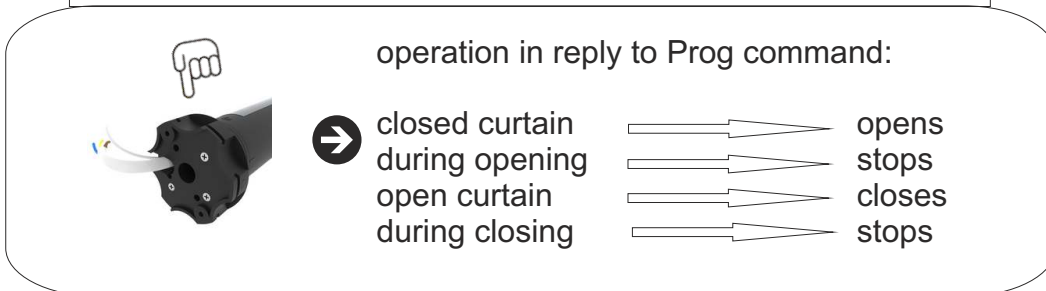
GI.BI.DI. S.r.l. reserves the right to modify the technical data without prior notice, in relation to product development

5 - Operation mode: Automantic or hold-to-run of the transmitter

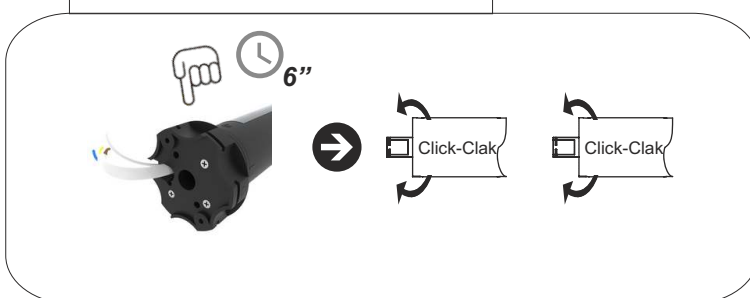


9 - Advanced functions of Prog button of motor header

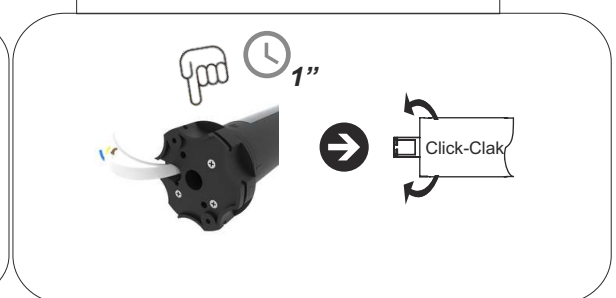
9a - The header Prog button operates as Start with step by step with stop logic



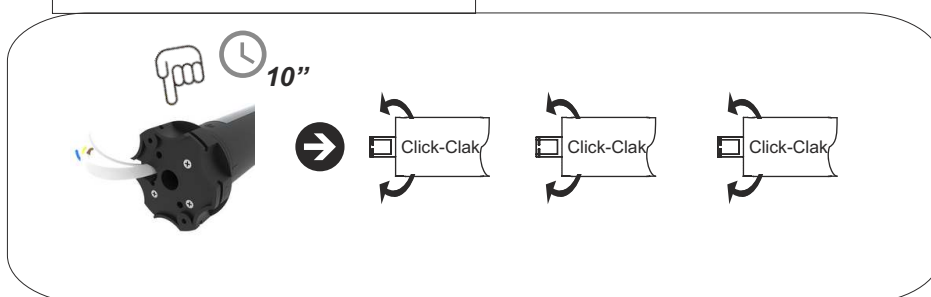
9b - Enables the Radio block



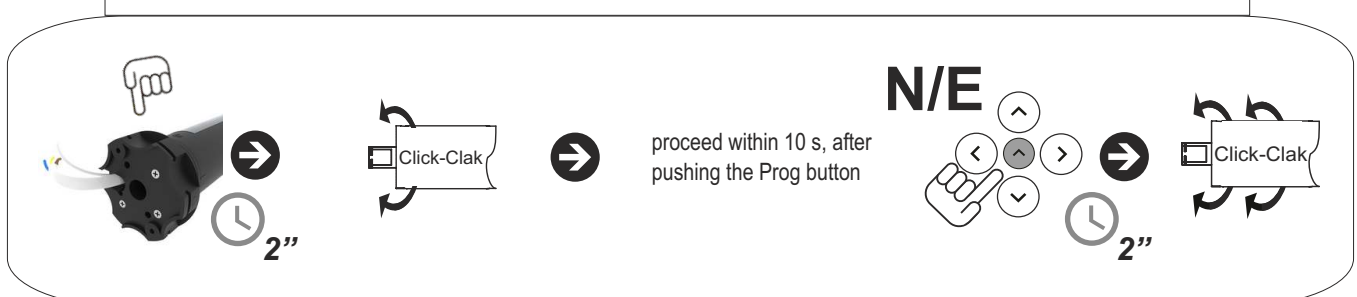
9c - Disables the Radio block



9d - Modification of the rotation direction



9e - Store / cancel one transmitter



GIBIDI

GI.BI.DI. S.r.l.

Via Abetone Brennero, 177/B
46025 Poggio Rusco (MN) - ITALY
Tel. +39.0386.52.20.11
Fax +39.0386.52.20.31
E-mail: info@gibidi.com

Numero Verde: 800.290156

www.gibidi.com

