



● RUNNER REB



REB35 6/28
REB35 10/17
REB45 10/26
REB45 20/17
REB45 30/17
REB45 50/12
REB55 80/12
REB55 100/12
REB55 120/9

Electronic tubular motor
INSTRUCTION FOR INSTALLATION

EN

Thank you for choosing GI.BI.DI.

 **READ CAREFULLY THIS MANUAL BEFORE PROCEEDING WITH THE INSTALLATION.**

WARNINGS:

This product has been tested in GI.BI.DI. for full compliance with the requirements of the directives in force. GI.BI.DI. S.r.l. reserves the right to change the technical data without prior notice, in relation to product development.

DISPOSAL: GI.BI.DI. advises recycling the plastic components and dispose of them at special authorised centres for electronic components, thus protecting the environment from polluting substances.



INTRODUCTION

RUNNER RE can satisfy every specific need to motorize curtains and roller shutters. The built-in radio receiver allows programming and managing the motor by remote control.

WARNINGS FOR THE INSTALLATION

- Before proceeding with the installation, fit a magneto thermal / differential switch with a max. capacity of 10 A upstream of the system. The switch must guarantee an omnipolar separation of the contacts, with an opening distance of at least 3mm.
- Keep all the materials contained in the packaging away from children, since they pose a potential risk.
- The manufacturer declines all responsibility for improper functioning of the automated device if the original components and accessories suitable for the specific application are not used.
- After the installation, always carefully check the proper functioning of the system and the devices used.
- This instruction manual addresses professionals qualified to install "powered equipment" and therefore requires good technical knowledge and installation in compliance with the regulations in force.
- The maintenance must be carried out by qualified personnel.
- Before carrying out any cleaning or maintenance operation, disconnect the control unit from the main line.
- This product has been designed and constructed exclusively for the use indicated in this documentation. Any other use may cause damage to the product and be a source of danger.
- Verify the end purpose of the product and take all the necessary safety precautions.
- The use of the products for purposes different from the intended use has not been tested by the manufacturer and is therefore on full responsibility of the installer.
- All the operations of installation, connection, programming and maintenance of the product must be carried out exclusively by a qualified and competent technician, respecting the laws, norms, local regulations and instruction indicated in this manual.
- Before starting the installation, read the paragraph «PRELIMINARY WARNINGS» to check if the product is suitable to automate your roller shutter (or curtain). If it is not suitable, DO NOT proceed to the installation.
- All the operations of installation and maintenance of the product must be done with the automatic device with the power disconnected. Moreover, before starting, put on the cut-off device the sign "WARNING! CURRENT MAINTENANCE".
- Before starting the installation operations, move away all the electrical cables involved; moreover, disable all the systems not necessary to the motorized operation of your roller shutter (or curtain).
- During the installation, keep the people away from the roller shutter (or curtain) when it is moving.
- The list of the mechanical parts necessary to match this motor with the roller shutter (or curtain) is in GiBiDi catalogue.
- If the product is installed at less than 2,5 m from the floor or other bearing surface, it is necessary to protect its moving parts with a cover, to prevent the accidental access. For the protection, make reference to the instruction manual of the roller shutter (or curtain), ensuring anyway the access for maintenance interventions.
- For awnings, it is necessary to ensure a min. horizontal distance of 40 cm between the awning completely open and an eventual fixed object, put in front of it.
- During the installation, handle the product carefully: avoid any crushing, shock, fall or contact with any liquid; do not introduce any sharp object in the motor; do not drill or apply any screws outside the motor; do not put the product near to sources of heat and do not expose it to an open flame.
- These actions can damage the product and cause malfunctions or dangerous situations. In these cases, immediately stop the installation and call GiBiDi Technical Assistance.
- Do not put any screw on the roller tube, in the section internally crossed by the motor. These screws could damage the motor.
- Do not disassemble the product for operations different from the ones indicated in this manual.
- Do not modify any part of the product, if not indicated in this manual. The manufacturer declines any responsibility for damages deriving from arbitrary modifications to the product.
- The power cable of the motor is in PVC and is suitable to the use outdoor. For the use in other environments, protect the cable for all its length, putting it in a specific duct for the protection of electrical cables.
- The power cable of the system cannot be replaced. If the cable is damaged, the system must be scrapped.

WARNINGS FOR THE USER

- The product may not be used by people (included children) with reduced physical, sensorial or mental capacities, or without experience or knowledge.
- Do not allow children to play with fixed control devices.
- During the manoeuvre, check the automation and keep people in safe distance until the end of the movement.
- Do not command the automation when works as glass cleaning, maintenance, etc. are carried out nearby. Disconnect the power supply before making these works.
- Remind to often check the balance springs and the wear of the cables (if there are these mechanisms). Do not use the automation, if it needs some adjustment or repair; exclusively address to specialized technical personnel to solve these problems.



WARNING: IMPORTANT SAFE INSTRUCTION
It is important to follow these instruction to safeguard people.
Keep this instruction manual.

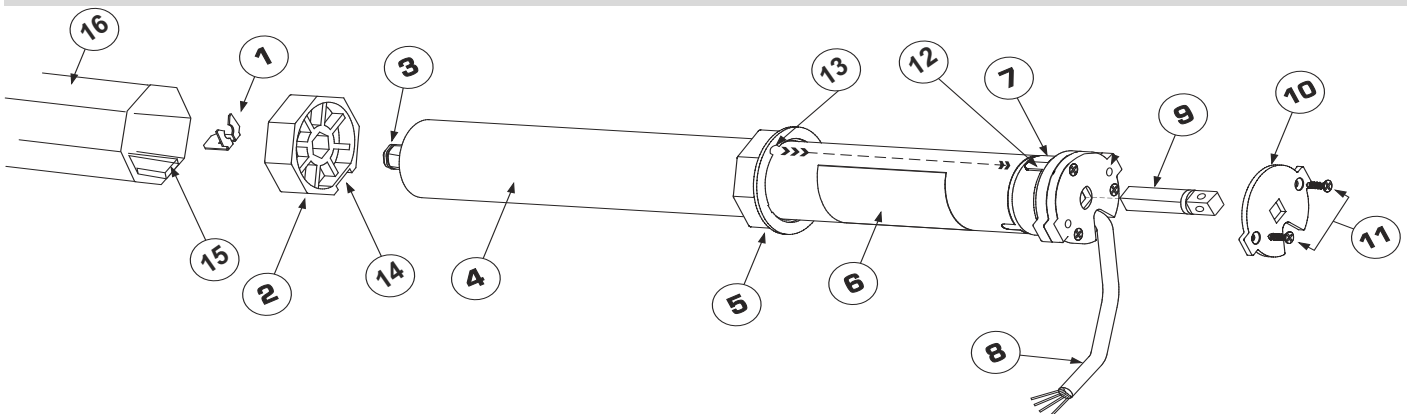
TECHNICAL DATA

Operator	RE35 6/28	RE35 10/17	RE45 10/26	RE45 20/17	RE45 30/17	RE45 50/12	RE55 80/12	RE55 100/12	RE55 120/9
Nominal torque	6Nm	10Nm	10Nm	20Nm	30Nm	50Nm	80Nm	100Nm	120Nm
Nominal speed	28rpm	17rpm	26rpm	17rpm	17rpm	12rpm	12rpm	12rpm	9rpm
Tube diameter	35mm	35mm	45mm	45mm	45mm	45mm	55mm	55mm	55mm
Nominal power	121W	121W	145W	145W	191W	205W	385W	420W	385W
Max. turns no.	32	32	Unlimited	Unlimited	Unlimited	Unlimited	22	22	22
Power supply	230Vac 50Hz								
Operating temperature	-20°C + 60°C								
Degree of protection IP	IP 44								
Frequency of use	Max 4min granted of continuous use								
Radio receiver	433,92MHz, built-in								

PRELIMINARY WARNINGS

- Check the integrity of the product right after having removed the package.
- This product is available in different versions, each one with a specific motor torque. Each version is designed to move roller shutters (or curtains) with specific dimensions and weight. Therefore, before the installation, be sure that the parameters of motor torque, rotation speed and operation time of this product are suitable to automate your roller shutter (or curtain). In particular, do not install the product if the motor torque is higher than the one necessary to move your roller shutter (or curtain).
- Check the diameter of the roller tube, that must be chosen according to the motor torque.
- Before automate a curtain, check that, in front of it, there is free space, sufficient for the total opening required.
- In case of installation outdoor, properly protect the motor from the atmospheric agents.

COMPOSITION OF THE MOTOR



- 1 Locking clip of the pulley on the pinion
- 2 Driving pulley
- 3 Output pinion
- 4 Motor tube
- 5 Adapter ring gear
- 6 Label with motor data
- 7 Limit switch base crown
- 8 Power cable

- 9 Square pin
- 10 Iron plate to block the pin on limit switch header
- 11 Plate closing screws on limit switch header
- 12-13 Driving pulley slot
- 14 Roller tube slot
- 15 Roller tube

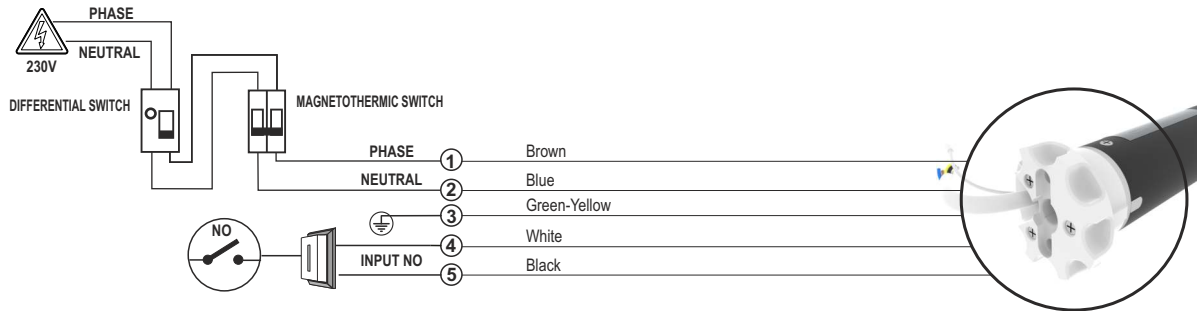
EN

INSTALLATION

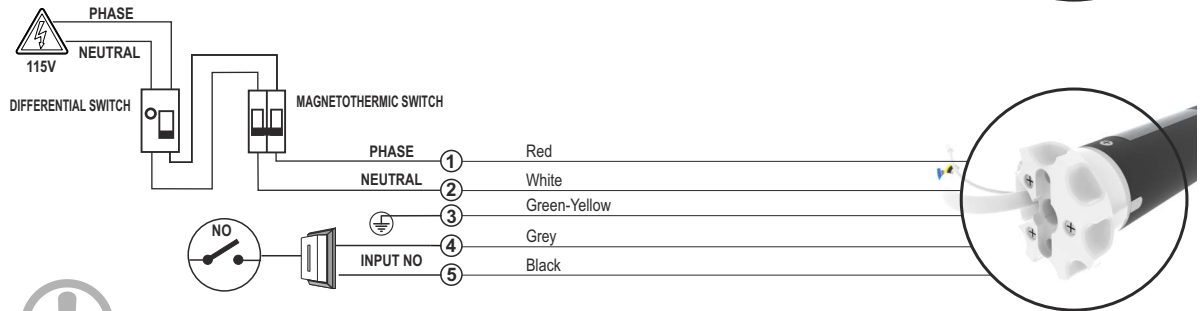
- Put the adapter crown (5) on the base crown of the limit switch (7), being sure that the two reference joints (12 and 13) match.
- Put the driving pulley (2) on the output pinion (3).
- After putting the driving pulley on the output pinion, block it with the clip (1).
- Put the square pin (9) in the square hole of limit switch header.
- Put the iron plate (10) in the square pin (9) and fix it with the two closing screws (11).
- Put the motor (4) in the roller tube (16), paying attention that the slot (14) of the driving pulley matches the roller tube slot (15).
- Push the motor as long as the adapter crown (5) fits in the roller tube (16).

CONNECTIONS

RUNNER REB
230V



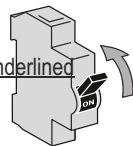
RUNNER REB
115V



The NO input works as start with step by step with stop logic both in opening and closing

SYMBOLS LEGEND

The values by DEFAULT of the different parameters are underlined

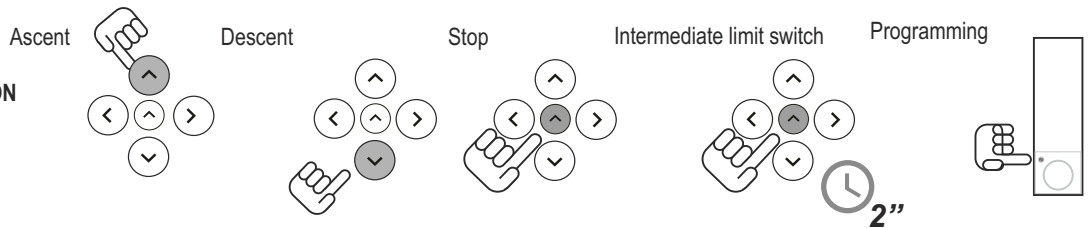


Supply the motor



Parts to be read carefully

REMOTE CONTROL OPERATION



PUSHING TIME

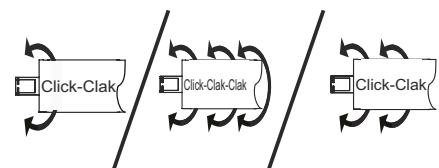


Push the button for X seconds

TRANSMITTER STATUS

- P** Transmitter already stored
- N** New transmitter not stored
- E** Transmitter to be cancelled

OPERATION CONFIRMATION



START UP:

1 - First transmitter storage

proceed within 5 seconds, after giving voltage to the motor

Warning: next actions of the curtain / roller shutter must be done hold-to-run (operation par. 5).
If the ascent and descent buttons of the transmitter stored are right, proceed to the par. 3, on the contrary to par. 2.

2 - Rotation direction modification

3 - Limit switch adjustment

Identify the storage procedure of the limit switch to be used according to the type of roller shutter.

Manual storage of the limit switch for a roller shutter/curtain not provided with opening / closing mechanical stops

Procedure 3a

Semi-automatic storage for a roller shutter / curtain provided with opening mechanical stops (ex: securblock or end caps) and not closing ones

Procedure 3b

Automatic storage of the limit switch for a roller shutter / curtain provided with opening and closing mechanical stops (ex: securblock or end caps)

Procedure 3c

3a - Limit switch manual storage



Warning: during the positioning, the transmitter actions with buttons of Ascent / Descent direction hold-to-run: any time you push a button (ascent or descent), the motor moves for 1 sec. Holding down the button for more than 2 seconds, the motor automatically moves.

descent limit switch

Put the roller shutter / curtain at lower limit switch

ascent limit switch

Put the roller shutter / curtain at upper limit switch

intermediate limit switch

Put the roller shutter / curtain at the intermediate position required

3b - Semi-automatic storage of the limit switch

The motor looks for and store the opening mechanical stop, then starts the closing phase up to the position required

3c - AUTOMATIC learning of the Opening and Closing limit switch

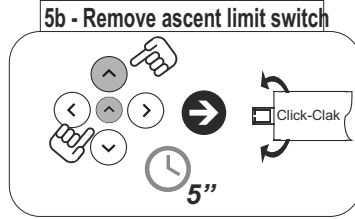
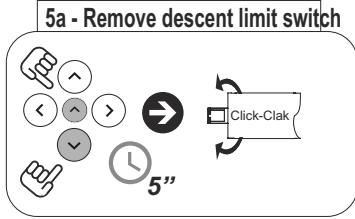
Movements done durin learning:

- The motor opens until detecting the opening mechanical stop;
- The motor closes until detecting the closing mechanical stop.
- End of the learning.

EN

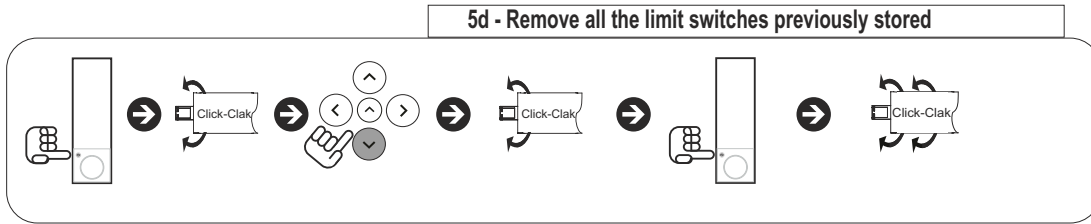
4 - Limit switch removal

! It is possible to remove either one limit switch or all the limit switches. The procedure can be made with the roller shutter / curtain in any position.

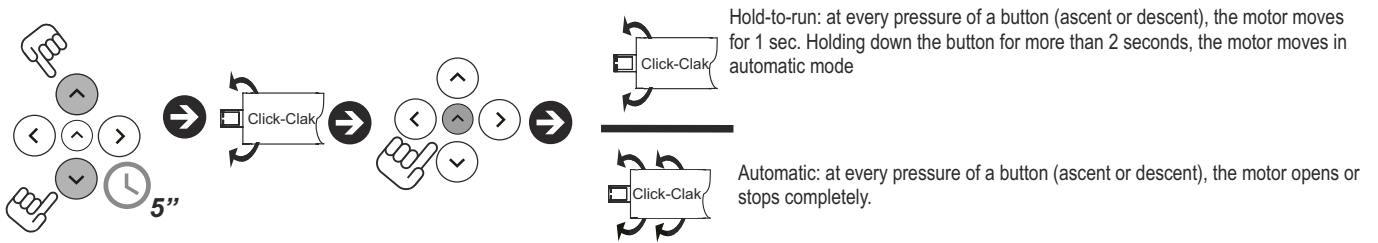


5c - Remove intermediate limit switch

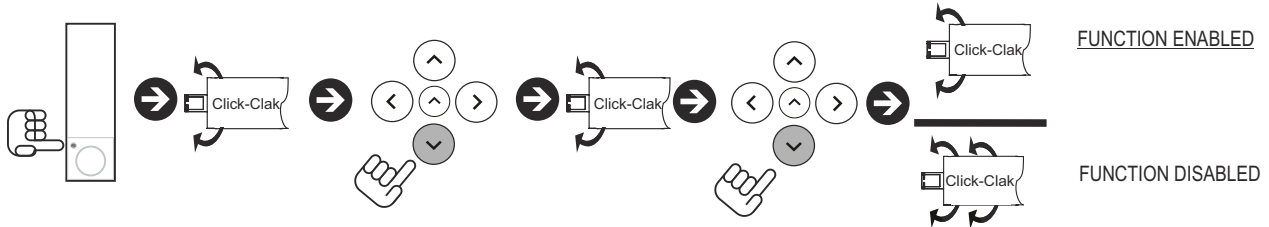
Follow the same procedure indicated in "INTERMEDIATE LIMIT SWITCH" in chapter 3a



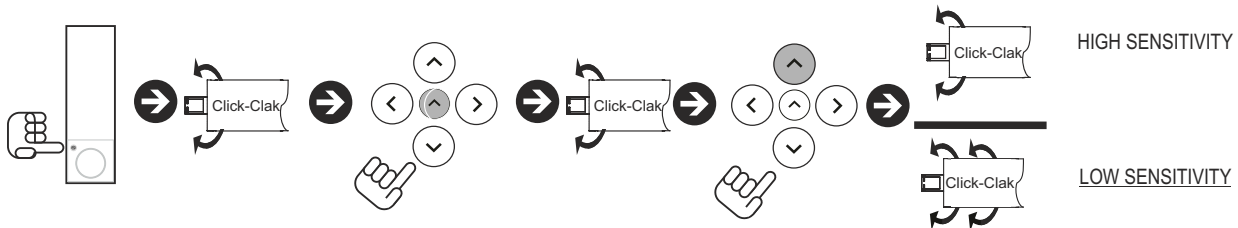
5 - Operation mode: Automatic or hold-to-run of the transmitter



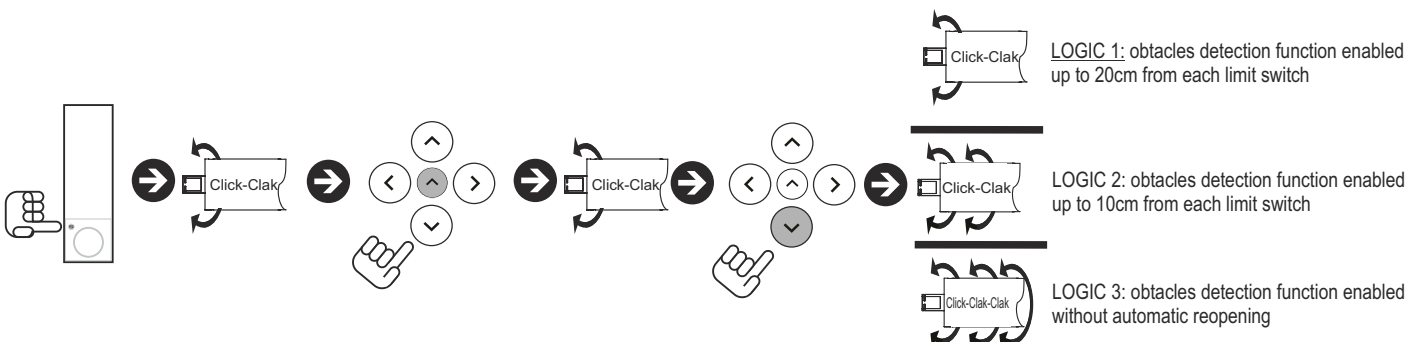
6 - Enable / disable the obstacles detection function (its intervention in closing causes the inversion of the movement up to the complete opening)



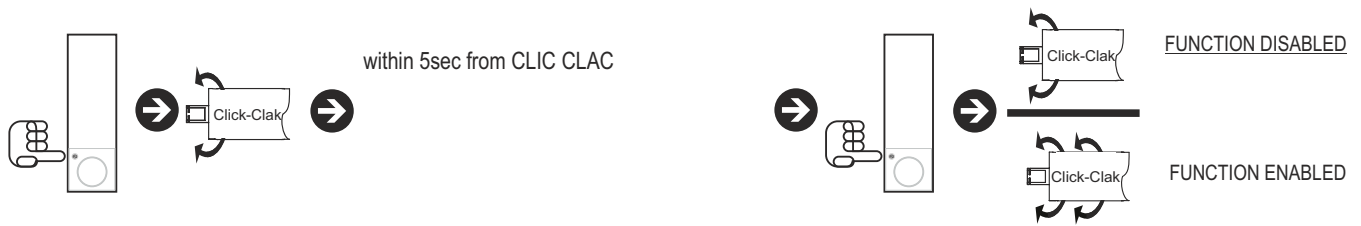
7 - Adjustment of threshold sensitivity of obstacles detection



8 - Logic setting for obstacles detection function

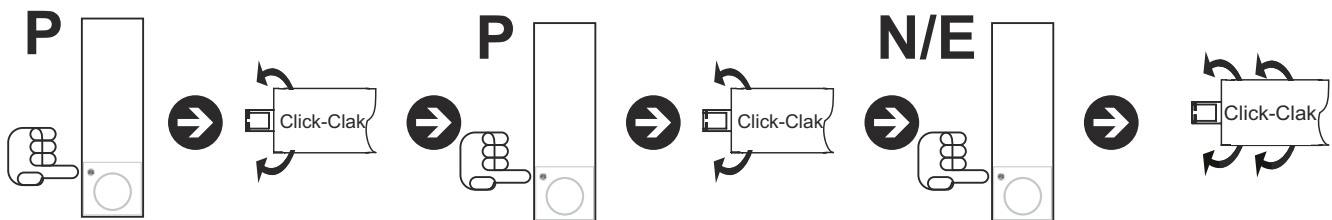


9 - Enable/Disable the radio signal repeater function

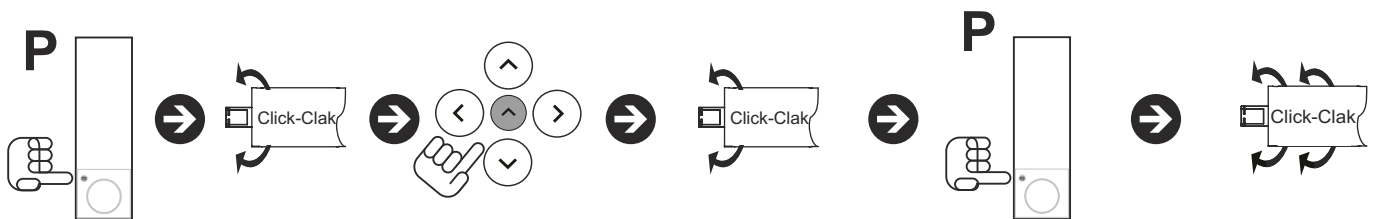


the function allows to expand the radio signal, because BiDi motors can be used as signal repeaters. It is suggested to use this function in rooms where there are more BiDi motors.

10 - Store or cancel one transmitter



11 - Cancel all the transmitters



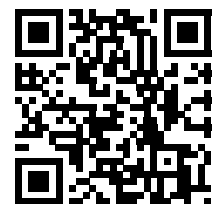
GUIDE TO PROBLEMS SOLUTION

- **Giving a movement command or pushing the button to start a manoeuvre, the motor does not start.**
 - a) Check if the thermic protection of the motor is taking place. In this case, to restore the normal operation, just wait for the motor to cool down.
 - b) Check if there is line voltage and if it corresponds to the values indicated on motor label.
 - c) Check if the power cable is undamaged.
- **If the motor does not automatically stop when the roller shutter (or the curtain) arrives to a limit switch.**
 - a) During the manoeuvre, be sure that the roller tube drags the ring of the limit switch.
- **The first transmitter cannot be stored**
 - a) Repeat the procedure "Storage of the first transmitter"
- **All the transmitters cannot be cancelled from the memory of the motor**
 - a) Be sure that the transmitter used to make the procedure «cancel all the transmitters» is stored

If, after these checks, the problems continue, address to a qualified technician, or contact GiBiDi Assistance Service.



Download instruction in English
Descarga instrucciones en Español
Téléchargements instructions en Français



Declaration of UE manufacturer:

The UE Declaration of Conformity is available at <http://conformity.gibidi.com>
 GI.BI.DI. S.r.l. reserves the right to change the technical data without prior notice, in relation to product development

GIBIDI

GI.BI.DI. S.r.l.

Via Abetone Brennero, 177/B
46025 Poggio Rusco (MN) - ITALY
Tel. +39.0386.52.20.11
Fax +39.0386.52.20.31
E-mail: info@gibidi.com

Numero Verde: 800.290156

www.gibidi.com

