

BAC

61	VALVOLA DI NON RITORNO	1	
51	SEGER 1 16 UNI 7437	1	
50	SEGER 1 9 UNI 7437	1	
53	TAPPO VALVOLA OTTONE	1	AH02580
70	OR 201 AL/0-0-0-08 POLY/PC	1	
55	MOLLA L. 25x6,5x0,4	1	
56	STIPA 5/16 Ø8 (S1)	1	
69	OR 200 AL/0-0-0-08 POLY/PC	3	
68	OR 200 AL/0-0-0-08 POLY/PC	3	
67	OR 200 AL/0-0-0-08 POLY/PC	3	
66	OR 200 AL/0-0-0-08 POLY/PC	3	
65	OR 200 AL/0-0-0-08 POLY/PC	3	
64	OR 200 AL/0-0-0-08 POLY/PC	3	
63	OR 200 AL/0-0-0-08 POLY/PC	3	
62	OR 200 AL/0-0-0-08 POLY/PC	3	
61	OR 200 AL/0-0-0-08 POLY/PC	3	

VALVOLA REGOLAZIONE/REGULATION VALVE

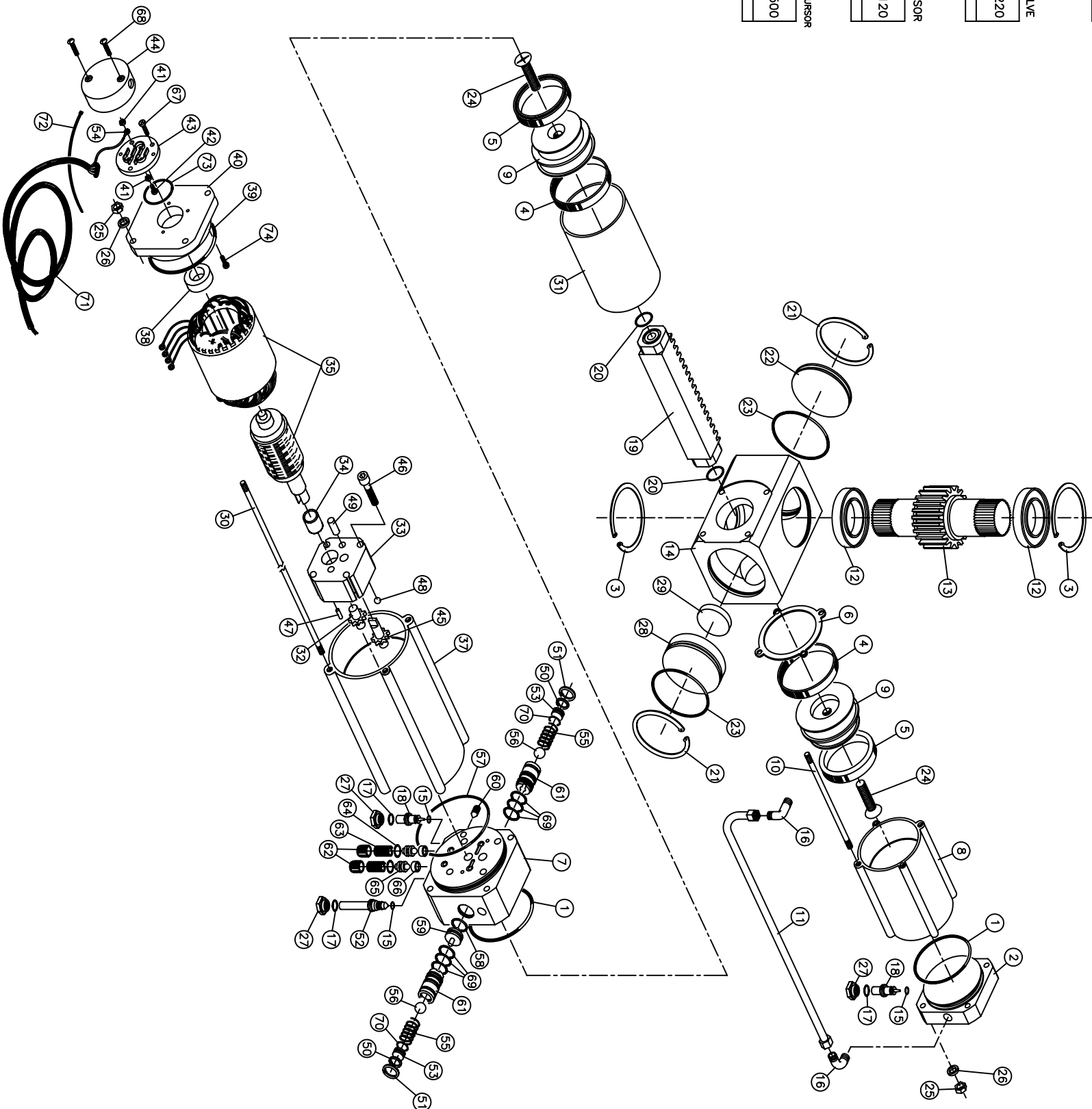
62	VALVOLA REGOLAZIONE PRESSIONE	1	
63	MOLLA VALVOLA REGOL. PRESS.	1	AH02220
64	OR 108 AL/0-0-0-08 POLY/PC	1	
65	OR 108 AL/0-0-0-08 POLY/PC	1	
66	OR 108 AL/0-0-0-08 POLY/PC	1	
67	OR 108 AL/0-0-0-08 POLY/PC	1	
68	OR 108 AL/0-0-0-08 POLY/PC	1	
69	OR 108 AL/0-0-0-08 POLY/PC	1	
70	OR 108 AL/0-0-0-08 POLY/PC	1	
71	OR 108 AL/0-0-0-08 POLY/PC	1	
72	OR 108 AL/0-0-0-08 POLY/PC	1	
73	OR 108 AL/0-0-0-08 POLY/PC	1	
74	OR 108 AL/0-0-0-08 POLY/PC	1	
75	OR 108 AL/0-0-0-08 POLY/PC	1	
76	OR 108 AL/0-0-0-08 POLY/PC	1	
77	OR 108 AL/0-0-0-08 POLY/PC	1	
78	OR 108 AL/0-0-0-08 POLY/PC	1	
79	OR 108 AL/0-0-0-08 POLY/PC	1	
80	OR 108 AL/0-0-0-08 POLY/PC	1	
81	OR 108 AL/0-0-0-08 POLY/PC	1	
82	OR 108 AL/0-0-0-08 POLY/PC	1	
83	OR 108 AL/0-0-0-08 POLY/PC	1	
84	OR 108 AL/0-0-0-08 POLY/PC	1	
85	OR 108 AL/0-0-0-08 POLY/PC	1	
86	OR 108 AL/0-0-0-08 POLY/PC	1	
87	OR 108 AL/0-0-0-08 POLY/PC	1	
88	OR 108 AL/0-0-0-08 POLY/PC	1	
89	OR 108 AL/0-0-0-08 POLY/PC	1	
90	OR 108 AL/0-0-0-08 POLY/PC	1	
91	OR 108 AL/0-0-0-08 POLY/PC	1	
92	OR 108 AL/0-0-0-08 POLY/PC	1	
93	OR 108 AL/0-0-0-08 POLY/PC	1	
94	OR 108 AL/0-0-0-08 POLY/PC	1	
95	OR 108 AL/0-0-0-08 POLY/PC	1	
96	OR 108 AL/0-0-0-08 POLY/PC	1	
97	OR 108 AL/0-0-0-08 POLY/PC	1	
98	OR 108 AL/0-0-0-08 POLY/PC	1	
99	OR 108 AL/0-0-0-08 POLY/PC	1	
100	OR 108 AL/0-0-0-08 POLY/PC	1	

CURSORE SBLOCCO/UNLOCKING CURSOR

E2	CURSORE	1	
E1	CURSORE	1	AH02120
E0	CURSORE	1	
D0	CURSORE	1	
C0	CURSORE	1	
B0	CURSORE	1	
A0	CURSORE	1	
90	CURSORE	1	
80	CURSORE	1	
70	CURSORE	1	
60	CURSORE	1	
50	CURSORE	1	
40	CURSORE	1	
30	CURSORE	1	
20	CURSORE	1	
10	CURSORE	1	
00	CURSORE	1	

CURSORE REG. VELOCITA'/SPEED ADJUSTING CURSOR

18	CURSORE	1	
15	CURSORE	1	AH02500
12	CURSORE	1	
9	CURSORE	1	
6	CURSORE	1	
3	CURSORE	1	
0	CURSORE	1	



CORSA = 64 mm
 ROTAZIONE = 136 GRADI

VALIDO DAL
 20/04/09.....

74	VITE 2,9x6,5 INOX 7981	1	A023242
73	OR 210 AL/0-0-0-08 POLY/PC	1	A011890
72	OR 210 AL/0-0-0-08 POLY/PC	1	A011890
71	OR 210 AL/0-0-0-08 POLY/PC	1	A011890
70	OR 201 AL/0-0-0-08 POLY/PC	2	A023100
69	OR 200 AL/0-0-0-08 POLY/PC	6	A023100
68	OR 200 AL/0-0-0-08 POLY/PC	6	A023100
67	OR 200 AL/0-0-0-08 POLY/PC	3	A023100
66	OR 200 AL/0-0-0-08 POLY/PC	2	A023100
65	OR 200 AL/0-0-0-08 POLY/PC	2	A023100
64	OR 200 AL/0-0-0-08 POLY/PC	2	A023100
63	OR 200 AL/0-0-0-08 POLY/PC	2	A023100
62	OR 200 AL/0-0-0-08 POLY/PC	2	A023100
61	OR 200 AL/0-0-0-08 POLY/PC	2	A023100
60	OR 200 AL/0-0-0-08 POLY/PC	2	A023100
59	OR 200 AL/0-0-0-08 POLY/PC	2	A023100
58	OR 200 AL/0-0-0-08 POLY/PC	2	A023100
57	OR 200 AL/0-0-0-08 POLY/PC	2	A023100
56	OR 200 AL/0-0-0-08 POLY/PC	2	A023100
55	OR 200 AL/0-0-0-08 POLY/PC	2	A023100
54	OR 200 AL/0-0-0-08 POLY/PC	2	A023100
53	OR 200 AL/0-0-0-08 POLY/PC	2	A023100
52	OR 200 AL/0-0-0-08 POLY/PC	2	A023100
51	OR 200 AL/0-0-0-08 POLY/PC	2	A023100
50	OR 200 AL/0-0-0-08 POLY/PC	2	A023100
49	OR 200 AL/0-0-0-08 POLY/PC	2	A023100
48	OR 200 AL/0-0-0-08 POLY/PC	2	A023100
47	OR 200 AL/0-0-0-08 POLY/PC	2	A023100
46	OR 200 AL/0-0-0-08 POLY/PC	2	A023100
45	OR 200 AL/0-0-0-08 POLY/PC	2	A023100
44	OR 200 AL/0-0-0-08 POLY/PC	2	A023100
43	OR 200 AL/0-0-0-08 POLY/PC	2	A023100
42	OR 200 AL/0-0-0-08 POLY/PC	2	A023100
41	OR 200 AL/0-0-0-08 POLY/PC	2	A023100
40	OR 200 AL/0-0-0-08 POLY/PC	2	A023100
39	OR 200 AL/0-0-0-08 POLY/PC	2	A023100
38	OR 200 AL/0-0-0-08 POLY/PC	2	A023100
37	OR 200 AL/0-0-0-08 POLY/PC	2	A023100
36	OR 200 AL/0-0-0-08 POLY/PC	2	A023100
35	OR 200 AL/0-0-0-08 POLY/PC	2	A023100
34	OR 200 AL/0-0-0-08 POLY/PC	2	A023100
33	OR 200 AL/0-0-0-08 POLY/PC	2	A023100
32	OR 200 AL/0-0-0-08 POLY/PC	2	A023100
31	OR 200 AL/0-0-0-08 POLY/PC	2	A023100
30	OR 200 AL/0-0-0-08 POLY/PC	2	A023100
29	OR 200 AL/0-0-0-08 POLY/PC	2	A023100
28	OR 200 AL/0-0-0-08 POLY/PC	2	A023100
27	OR 200 AL/0-0-0-08 POLY/PC	2	A023100
26	OR 200 AL/0-0-0-08 POLY/PC	2	A023100
25	OR 200 AL/0-0-0-08 POLY/PC	2	A023100
24	OR 200 AL/0-0-0-08 POLY/PC	2	A023100
23	OR 200 AL/0-0-0-08 POLY/PC	2	A023100
22	OR 200 AL/0-0-0-08 POLY/PC	2	A023100
21	OR 200 AL/0-0-0-08 POLY/PC	2	A023100
20	OR 200 AL/0-0-0-08 POLY/PC	2	A023100
19	OR 200 AL/0-0-0-08 POLY/PC	2	A023100
18	OR 200 AL/0-0-0-08 POLY/PC	2	A023100
17	OR 200 AL/0-0-0-08 POLY/PC	2	A023100
16	OR 200 AL/0-0-0-08 POLY/PC	2	A023100
15	OR 200 AL/0-0-0-08 POLY/PC	2	A023100
14	OR 200 AL/0-0-0-08 POLY/PC	2	A023100
13	OR 200 AL/0-0-0-08 POLY/PC	2	A023100
12	OR 200 AL/0-0-0-08 POLY/PC	2	A023100
11	OR 200 AL/0-0-0-08 POLY/PC	2	A023100
10	OR 200 AL/0-0-0-08 POLY/PC	2	A023100
9	OR 200 AL/0-0-0-08 POLY/PC	2	A023100
8	OR 200 AL/0-0-0-08 POLY/PC	2	A023100
7	OR 200 AL/0-0-0-08 POLY/PC	2	A023100
6	OR 200 AL/0-0-0-08 POLY/PC	2	A023100
5	OR 200 AL/0-0-0-08 POLY/PC	2	A023100
4	OR 200 AL/0-0-0-08 POLY/PC	2	A023100
3	OR 200 AL/0-0-0-08 POLY/PC	2	A023100
2	OR 200 AL/0-0-0-08 POLY/PC	2	A023100
1	OR 200 AL/0-0-0-08 POLY/PC	2	A023100